



UCONN

SCHOOL OF ENGINEERING

Fall 2023 Updates

Shoshana Armington & Mariel Zoni



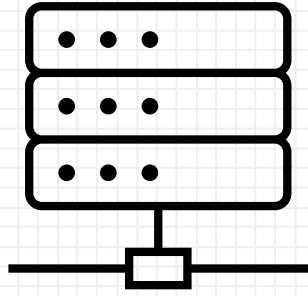
Advising in SoE is...

- (de)centralized



- based on a 2+2 model





Data Science

<https://catalog.uconn.edu/school-of-engineering/data-science-and-engineering/>



First Semester Coursework

X CHEM 1127Q or PHYS 1501Q/1401Q

X MATH 1131Q or next course in math sequence thru MATH 2410Q (**CS majors must take Calc 1, 2 and 3, MATH 2410Q removed as an option*)

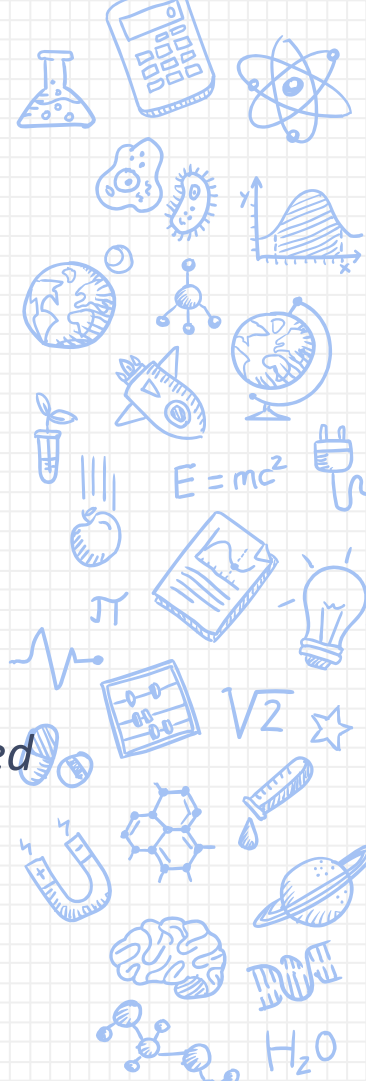
X ENGL 1007 (or gen ed course)

X General Education requirement

(Phil 1104 will partially fulfill CA 1)

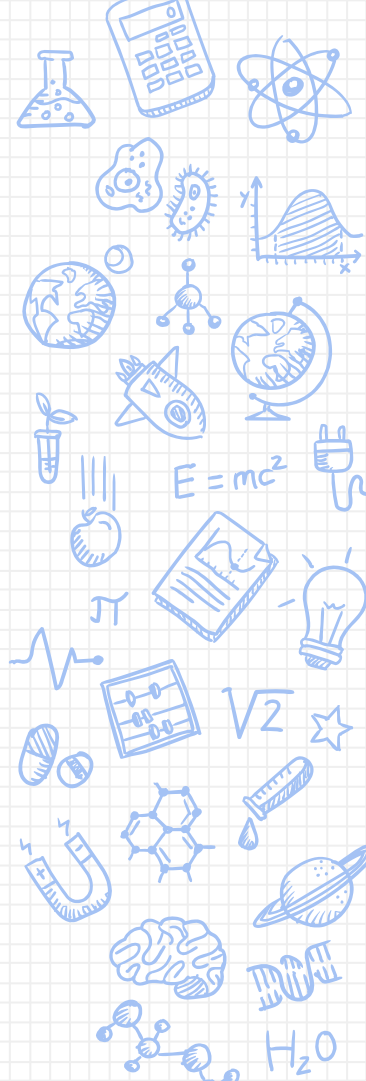
X CSE 1010 - *offered fall, spring and summer*

X ENGR 1000 - *seats for ENGR students only, requirement waived for those who miss taking it*



Regional Campus Students

- X Mirrors curriculum of Storrs-based students
- X SoE students can change to Storrs after 1 or 2 years depending on major and offerings
- X Computer Science is a 4-year program at Stamford
- X Distance Learning courses offered “centrally”
 - MSE 2101 (Fall)
 - CE 2110 (Fall)
 - ME 2233 (Spring)
 - ECE 2001 (Spring)



Best point of contact?

X Shoshana Armington
(Exploring ENGR and Regional
ENGR)

Virtual drop-ins on Fridays 12pm-
2pm or email



Career
Diversity
Facebook
Scholarships
Curriculums
Involvement
Tutoring
Advisors
Contact
Outreach
FAQs
Twitter

Get more info:

<http://undergrad.engr.uconn.edu>

