

Fall 2024 Updates

Shoshana Armington & Kelsey Glynn



College of Engineering

School of Mechanical, Aerospace, and Manufacturing Engineering

BS Degree:
Management & Engineering
for Manufacturing (MEM)

BSE Degree:
Mechanical Engineering

School of Computing

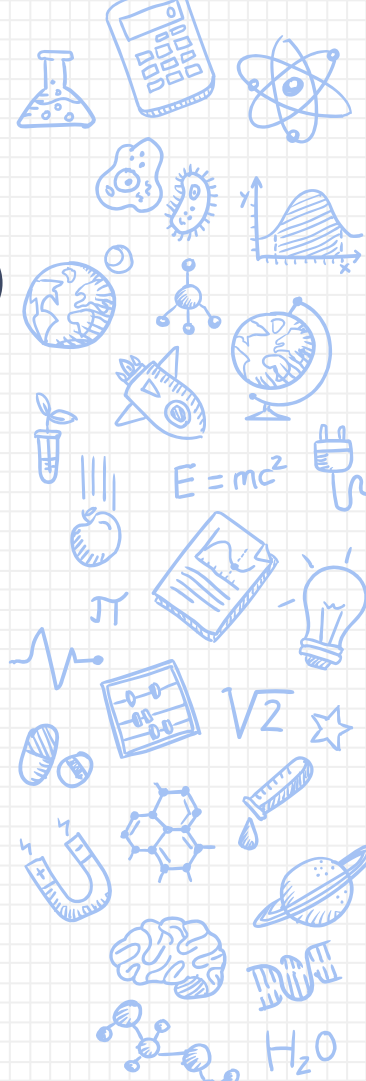
BS Degrees:
Computer Science
Data Science & Engineering

BSE Degrees:
Computer Science & Engineering
Computer Engineering

15 Engineering Majors

- X Biomedical Engineering*
- X Chemical Engineering
- X Civil Engineering
- X Computer Engineering*
- X Computer Science*
- X Computer Science & Engineering*
- X Data Science & Engineering*
- X Electrical Engineering
- X Engineering Physics (ENGR/CLAS)
- X Environmental Engineering
- X Management & Engineering for Manufacturing* (ENGR/BUSN)
- X Materials Science & Engineering
- X Mechanical Engineering*
- X Multidisciplinary Engineering
- X Robotics

***Programs with limited space availability – admission can be highly competitive**



Advising in CoE is...

- **centralized** (Starting Fall 24')



- **based on a 2+2 model**



New Advising Website: <https://advising.engineering.uconn.edu/>

**** Common Curriculum maps coming!**

XCHEM 1127Q (*Alternate sequence accepted*)

X MATH 1131Q or next course in math sequence thru MATH

2410Q (*CS/DSE majors must take Calc 1, 2 and 3)

X CSE 1010 - (Restricted in fall for ENGR in Storrs)

XENGL 1007 (or gen ed course)

X General Education requirement

(Phil 1104 will partially fulfill CA 1)

STORRS ONLY: NO ENGR 1000 FOR FALL 2024 (Undergoing redesign). ACES will recommended UNIV 1820: Exploring ENGR, others recommend UNIV 1800/1810/1820. Regionals ENGR 1000.

Admission for Current Students



X Deadlines– May 25, December 25

(www.request.engr.uconn.edu). *Just a form!*

X Reviews in January and June

X Admission based on space availability in major and academic performance at UConn

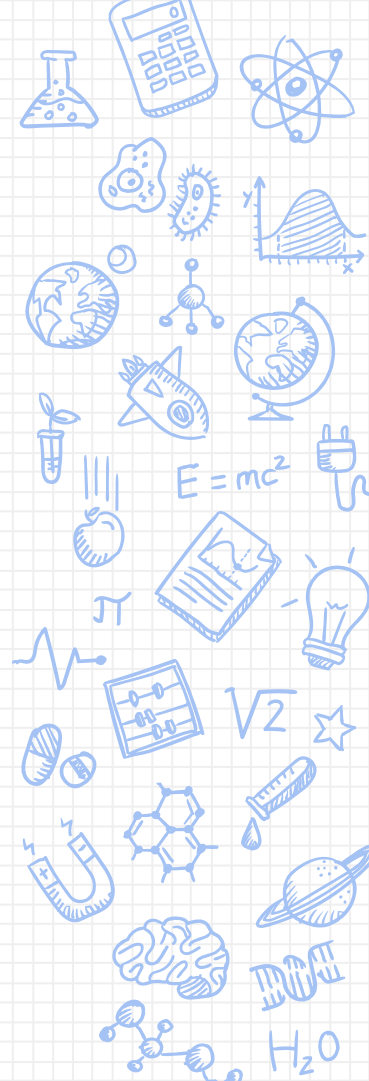
X 2.7 minimum cumulative GPA & STEM coursework

* Recommend MATH 1131Q (or beyond) and Lab Science in Fall to apply for Dec 25th

X Programs with limited space are more competitive

Supplementary Scholastic Standards

- X After **24** credits *in residence*
- X **2.5** cGPA or above will be good standing
- X **2.3-2.499** cGPA will be CoE scholastic probation
- X **14** credit course load restriction
- X Below a **2.3** cGPA will be subject to dismissal from CoE (to ACES)
- X There will be an opportunity to appeal



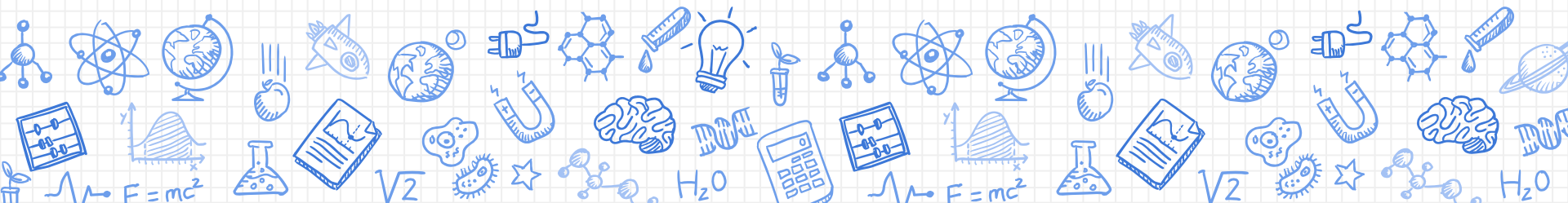
Regional Campus Students

- X Mirrors curriculum of Storrs-based students
- X CoE students may request campus change to Storrs after 1 or 2 years depending on major and offerings (*individual review*)
- X Computer Science is a 4-year program at Stamford
- X Distance Learning courses offered “centrally”
 - MSE 2101 (Fall)
 - CE 2110 (Fall)
 - ME 2233 (Spring)
 - ECE 2001 (Spring)



Transfer Equivalencies

Students can contact Shoshana with the course(s) syllabi and which UConn course they believe it to be equivalent to (www.catalog.uconn.edu)



Best point of contact?

Shoshana Armington (Exploring ENGR and Regional ENGR)

Virtual drop-ins on Fridays 12pm-2pm or email



<http://undergrad.engr.uconn.edu>

