

Fall 2025 Updates

College of Engineering

● *JP Lappen & Kelsey Glynn*



3 Schools

School of Computing

**School of Civil and Environmental
Engineering**

**School of Mechanical, Aerospace and
Manufacturing Engineering**

15 Majors

School of Computing

Computer Science BS | Data Science & Engineering BS | Computer Science & Engineering BSE | Computer Engineering BSE

School of Civil and Environmental Engineering

Civil Engineering BSE | Environmental Engineering BSE

School of Mechanical, Aerospace and Manufacturing Engineering

Mechanical Engineering BSE | Management & Engineering For Manufacturing BS ([ENGR](#)/[BUSN](#))

Other Departments

Biomedical Engineering BSE | Chemical Engineering BSE | Electrical Engineering BSE | Engineering Physics ([ENGR](#)/[CLAS](#)) | Multidisciplinary Engineering BSE | Material Science Engineering BSE | Robotics BSE

5 Tracks

Multidisciplinary Engineering

Industrial Design Specialization

Students utilize engineering, industrial design, and technology to create and develop products that are functional, aesthetically pleasing, and user-friendly. It focuses on the entire product lifecycle, from initial concept and design to prototyping, manufacturing, and distribution

Entertainment Engineering Specialization

This can cover a wide range of applications, such as theme park rides, stage productions, special effects, live events, and even video game environments

Human Rights and Sustainability Specialization

Work as key partners with nonprofit organizations and innovative business partners to push the frontiers of social and environmental sustainability in healthcare, natural resource management, and public access to key services such as transportation and digital security

*Pre-Med / Pre-Dental Specialization | **NEW***

Allows students to earn a Engineering degree and focus on different elements of engineering they might want to explore with a broader scope rather than a ridged curriculum such as BME or CHEG and incorporates all required pre-reqs for professional programs.

Individualized Design Specialization

Fall 2025 Updates

Advising in COE



Centralized Advising

E2 303

Location of our advising suite, open 5 days a week. We offer drop in advising everyday - *except Wednesdays*

During peak advising we are available 4 hours a day

2 + 2 Model

Staff/Faculty

Students work with staff advisors their first two years and then transition to faculty during upper course work. Staff advisors are generalists and advise across all majors

Educational Experience

Group Advising

Utilize a scaffolded group advising curriculum from orientation til sophomore spring. Students must attend advising every semester

Fall 2025 Updates

First Semester

CHEM 1127Q

Alternate sequence accepted

MATH 1131Q

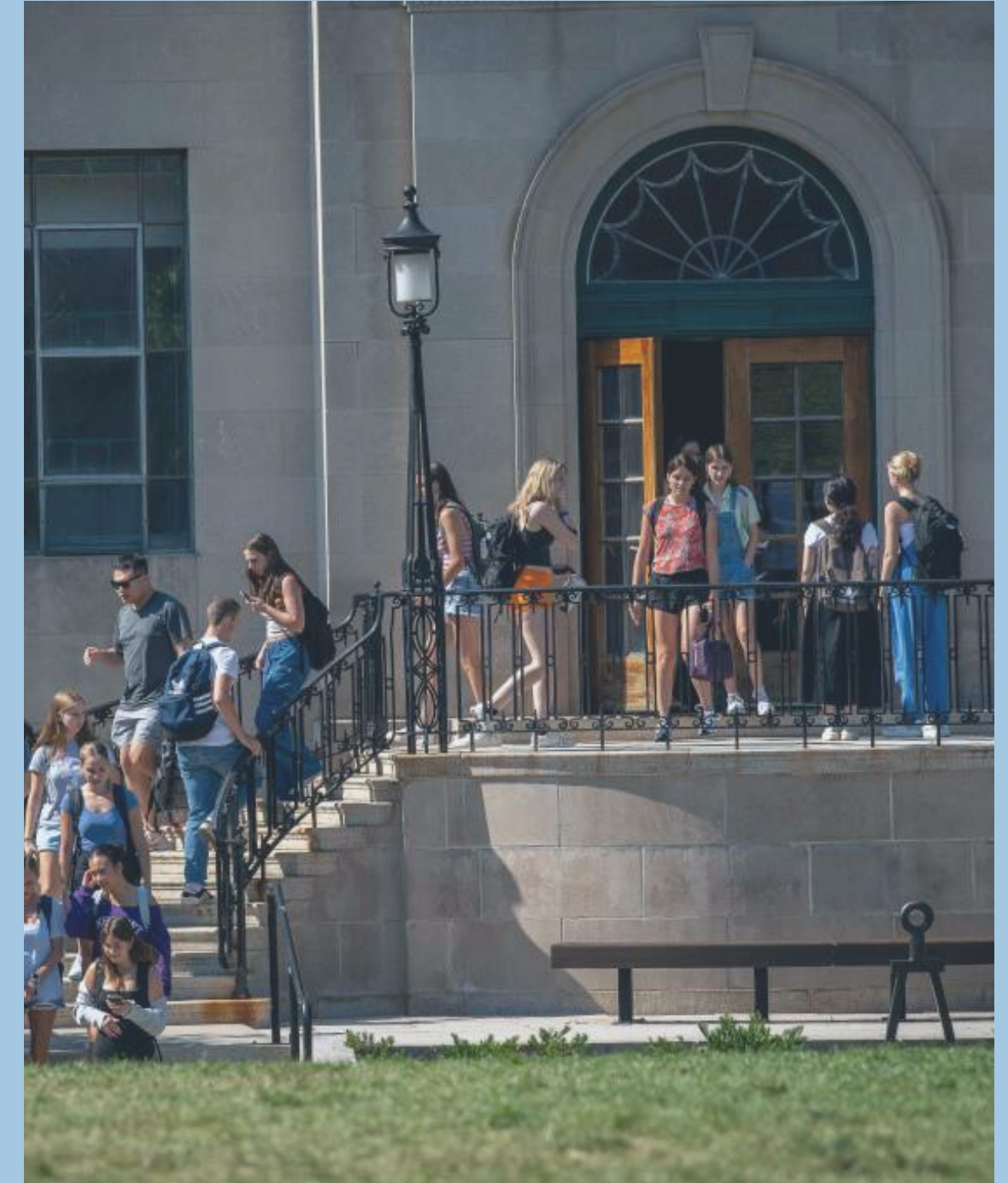
Or next sequence in math sequence. MATH 1060Q credit restriction

CSE 1010

Fall enrollment restricted to ENGR at Storrs Campus

ENGL 1007/TOI Course

College of Engineering will not have an specific TOI requirements



'New' Courses

Piloting a brand new version ENGR 1000:
Orientation to Engineering this fall

- Reserved at Storrs Campus for ENGR, open to all students at regionals (1 credit)

ENGR 1195: AI4ALL - New 2 credit course
50% of the seats will be open to all students

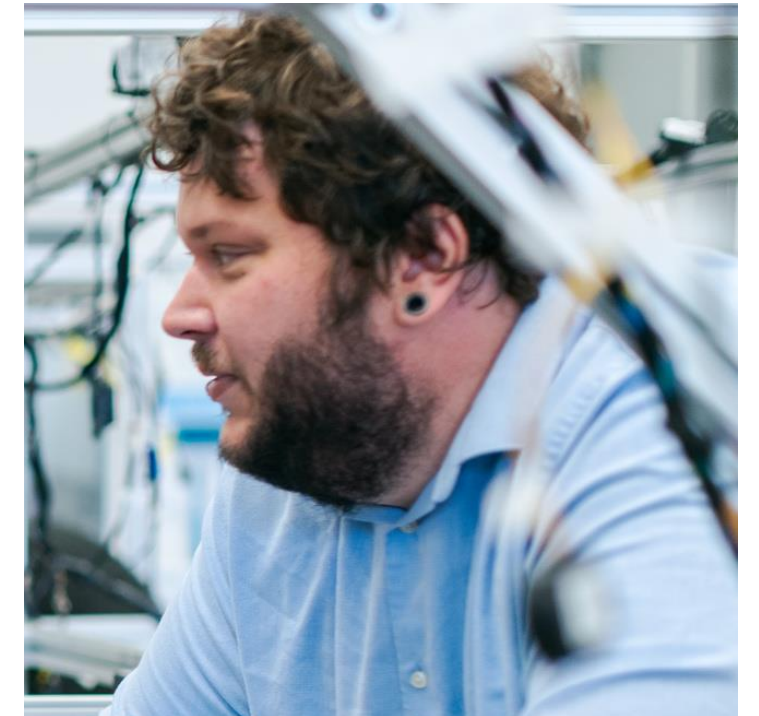
ENGR 1000

A series of orientation lectures on the many fields of engineering, followed by a series of seminars and discussions in engineering discipline-specific sections on engineering topics.



ENGR 1195

A freshman-level AI literacy course designed for students from all majors. This course introduces generative AI, its real-world applications, and ethical considerations, helping students develop a foundational understanding of AI's role in learning, creativity, and problem-solving.



Fall 2025 Updates

Internal Admissions

- Current admit standards are changing
- TBD on new criteria but will be posted on ENGR website in June
- Stick to First semester course work

New this fall

Direct Admit to Hartford



Supplementary Scholastic Standing

After 24 credits in residence

- **2.5** cGPA or above will be good standing
- **2.3-2.499** cGPA will be CoE scholastic probation

Below a **2.3** cGPA will be subject to dismissal from CoE (to [ACES](#))

Dismissal

Once a student is dismissed from CoE they will be major changed to ACES.

Returning to CoE

Working with students its important to make sure that students are going to be eligible to return to their major

Regional Curriculum

Mirror Storrs

Ideally students should match their major curriculum as much as possible. Although sometimes that might not be possible based on semesters offerings

Campus Change

Students should be completing 1-2 years at a regional campus but reviews are done on an individual basis

Stamford

Computer Science is a four year major at Stamford and we will be hiring another SPAR to help with advising caseload

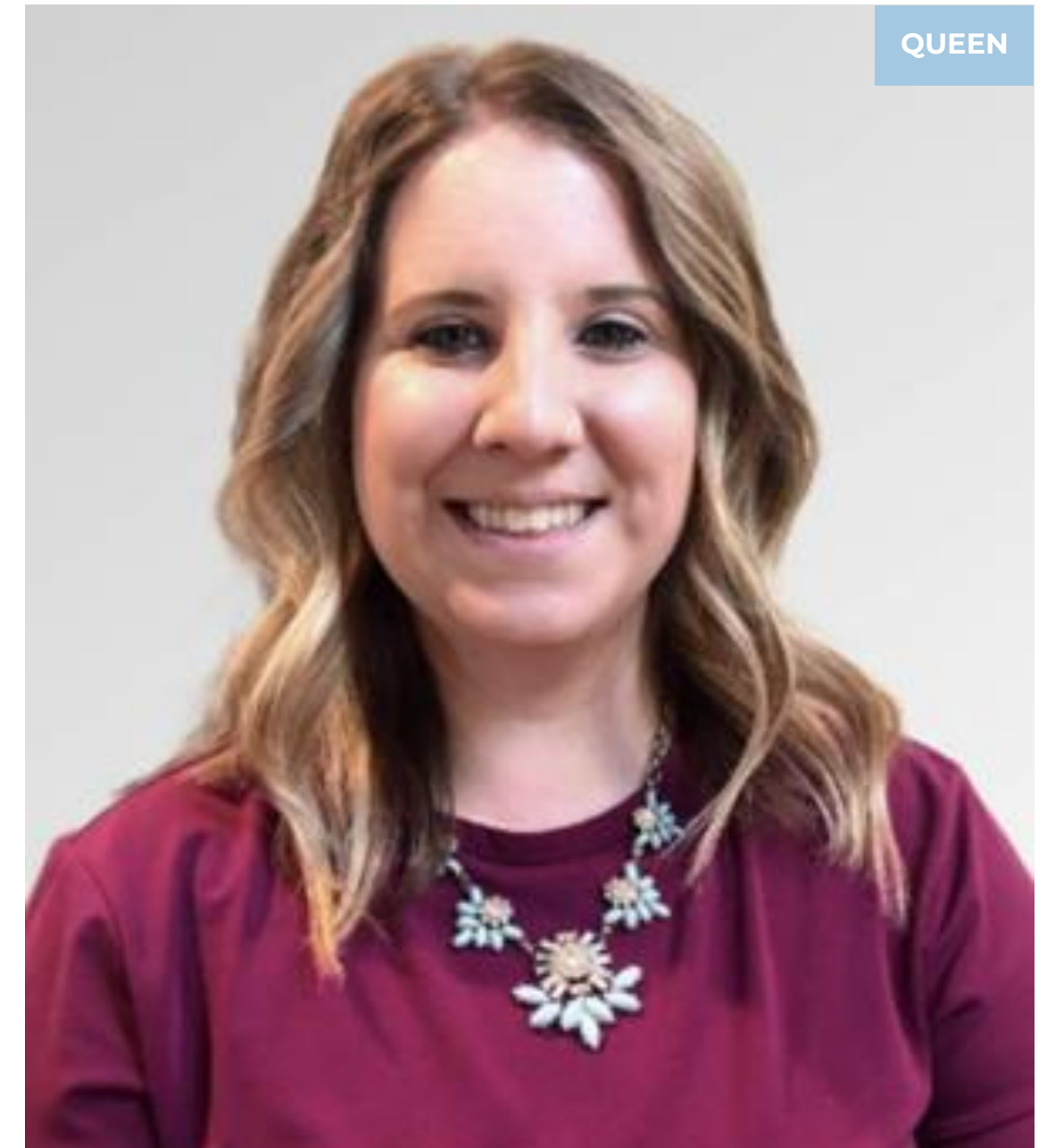


Best Contact

Shoshana Armington

To evaluate transfer equivalencies : Student needs to send previous course syllabus and what UConn course they believe it to be.

Virtual drop-ins on Fridays 12pm-2pm or appointments by email for Exploring ENGR and Regional ENGR



Thank You

Any Questions?

 kelsey.glynn@uconn.edu

 jp.lappen@uconn.edu