

UConn

SCHOOL OF PHARMACY

ACES Pre-Orientation Training

May 20, 2025



Agenda

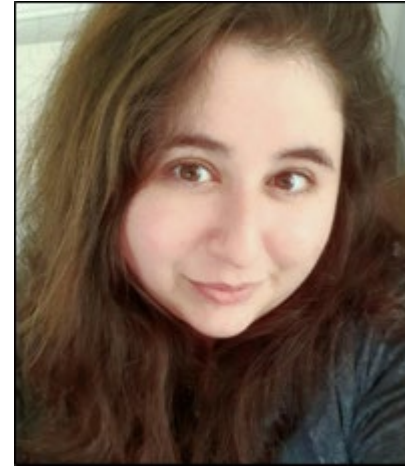
- Who We Are
- Pharm.D. Roadmap
- Pre-Professional First Year Plan
- Pre-Professional Prerequisites
- Updates for 2025
- Application to the Professional Program
- Resources & Links
- Questions



Who We Are



Megan Delaney, Ed.D.
She/Her/Hers
Pre-Professional Academic
Advisor
PBB 327
860-486-2674
megan.delaney@uconn.edu



Lyn Alexander, LMSW, MPA
They/She
Professional Advisor &
Admissions
PBB 328
860-486-0306
lyn.alexander@uconn.edu

Roadmap to the Pharm.D.



Pre-Professional First Year Plan of Study

Fall Semester		
Course Number	Credits	Course Name
BIOL 1107	4	Principles of Biology
CHEM 1127Q	4	General Chemistry I
MATH 1131Q	4	Calculus I
ECON 1201	3	Principles of Microeconomics
UNIV course	1	First-Year Experience
Total credits	16	

Spring Semester		
Course Number	Credits	Course Name
ENGL 1007	4	Seminar in Writing
CHEM 1128Q	4	General Chemistry II
PHYS 1201Q	4	General Physics I
TOI-1	3	Common Curriculum Requirement
TOI-4	3	Common Curriculum Requirement
Total credits	18	

Comprehensive pre-professional information may be found online:
<https://advising.pharmacy.uconn.edu/academics/curriculum-maps/>

Professional Program Prerequisites

1000-level Math & Science Courses		
BIOL 1107	4	Principles of Biology
CHEM 1127Q & CHEM 1128Q OR CHEM 1124Q & CHEM 1125Q & CHEM 1126Q OR CHEM 1147Q & CHEM 1148Q	8-10	General Chemistry
MATH 1131Q	4	Calculus I
PHYS 1201Q	4	General Physics I

1000-level Social Science & English Courses		
ECON 1201	3	Microeconomics
ANTH OR SOCL OR PSYC	3	Any 1000-level course
ENGL 1007 OR 1010 OR 1011	4	First-Year Writing

2000-level Science Courses		
PNB 2264 & PNB 2265 OR PNB 2274 & PNB 2275 OR PNB 2774 & PNB 2775 & PNB 2776	8-10	Human Anatomy & Physiology sequence
CHEM 2443 & CHEM 2444	6	Organic Chemistry I & II
MCB 2610	4-5	Microbiology
MCB 2000 OR MCB 3010	4-5	Biochemistry

Updates for 2025

- New professional curriculum rolling out fall 2025 🧡
- [Pharmacy Advising Website](#)
- **Guaranteed Transition** to the Professional Program!*
- Have a 3.0 or higher STEM prerequisite GPA at time of application and satisfactorily
- complete all prerequisites in-progress at the same level of competency.
- No STEM prerequisite with a grade of D, F, W, or P and no repeated STEM prerequisites.
- No grades of D or F for any course taken at a higher education institution.
- Submission of a satisfactory application via PharmCAS.
- Completion of an interview.
- Students cannot be on University Academic Notice.

*Applicants who do not meet all the above requirements are encouraged to still apply and be considered on a competitive basis.



Transition & Application to the Professional Program

- Applications to the School of Pharmacy's professional program are due in January the same year as intended matriculation
 - PharmCAS: fall entry only to professional program
- PCAT is no longer being offered. RIP. Hooray!
- All students must apply and be accepted into the professional program to obtain the B.S. in Pharmacy Studies and progress into the Pharm.D.



Competitive Applicants to the Professional Program

The Admissions Committee takes a holistic approach to applications, but generally is looking for:

- All prerequisite coursework completed or to be completed by the May prior to matriculation
- Preferred GPA of 3.0 or higher in math and science courses and overall
- Strong aptitude for math and science
- Demonstrated good citizenship
- An interest in and general knowledge of the pharmacy profession
- A professional demeanor
- Experience working or volunteering in healthcare settings

How to Connect With Us

- **Staff/faculty:** please feel free to reach out via email or Teams with questions but please do not connect students via email.
- **Prospective students:** must book an appointment via Nexus with either Megan or Lyn.
 - **Nexus appointments will be restricted to current Pharmacy students during the first 10 days of the semester and registration periods.**
 - Prospective students should **NOT** attempt to utilize resources that are reserved for current Pharmacy students
 - Regularly scheduled advising drop-ins
 - Registration drop-ins
 - Peer advising drop-ins

Resources & Links

- Pre-Professional Orientation Info: <https://advising.pharmacy.uconn.edu/orientation/pre-professional-students/>
- Curriculum Maps: <https://advising.pharmacy.uconn.edu/academics/curriculum-maps/>
- Pre-Professional Info: <https://advising.pharmacy.uconn.edu/>
- Pharm.D. Info: <https://pharmacy.uconn.edu/admission-academics/pharm-d-degree/>
- Pre-Professional Policies: <https://advising.pharmacy.uconn.edu/policies-forms/pre-professional-policies/>
- PharmCAS: <https://www.pharmcas.org/>
- Pharmacy Careers: <https://pharmacyforme.org/>

Thank you!

Questions?

On the web: pharmacy.uconn.edu

General email: pharmacy@uconn.edu

Social: @UConnPharmacy

Please don't hesitate
to reach out to us! We
are happy to meet with
potential students.



UConn | SCHOOL OF PHARMACY

