

Fall 2026 Updates

College of Engineering

- *Shoshana Armington*
Director, Engineering Undergraduate Program



3 Schools

School of Computing

**School of Civil and Environmental
Engineering**

**School of Mechanical, Aerospace and
Manufacturing Engineering**

15 Majors

School of Computing

Computer Science BS | Data Science & Engineering BS | Computer Science & Engineering BSE | Computer Engineering BSE

School of Civil and Environmental Engineering

Civil Engineering BSE | Environmental Engineering BSE

School of Mechanical, Aerospace and Manufacturing Engineering

Mechanical Engineering BSE | Management & Engineering For Manufacturing BS ([ENGR](#)/[BUSN](#))

Other Departments

Biomedical Engineering BSE | Chemical Engineering BSE | Electrical Engineering BSE | Engineering Physics ([ENGR](#)/[CLAS](#)) | Multidisciplinary Engineering BSE | Material Science Engineering BSE | Robotics BSE

Pre-Med | Pre-Dental Students

Multidisciplinary Engineering

Pre-Med / Pre-Dental

Individualized Specialization |

NEW-ish

Allows students to earn an Engineering degree and focus on different elements of engineering they might want to explore with a broader scope rather than a ridged curriculum such as BME or CHEG and incorporates all required pre-reqs for professional programs.

Course	Title	Credits
BIOL 1107	Principles of Biology I	4
CHEM 2443	Organic Chemistry	3
CHEM 2444	Organic Chemistry	3
CHEM 2445	Organic Chemistry Laboratory	3
MCB 2000	Biochemistry	4
MCB 2210	Cell Biology	3
MCB 2400 or MCB 2410	Human Genetics Genetics	3
MCB 2610 or PNB 2264	Fundamentals of Microbiology Human Physiology and Anatomy	4

Advising in COE (Storrs)

Centralized Advising

EII, Room 303

Location of our advising suite, open 5 days a week. We offer drop-in advising everyday - *except Wednesdays*. During peak advising we are available 4 hours a day for drop-ins.

2 + 2 Model

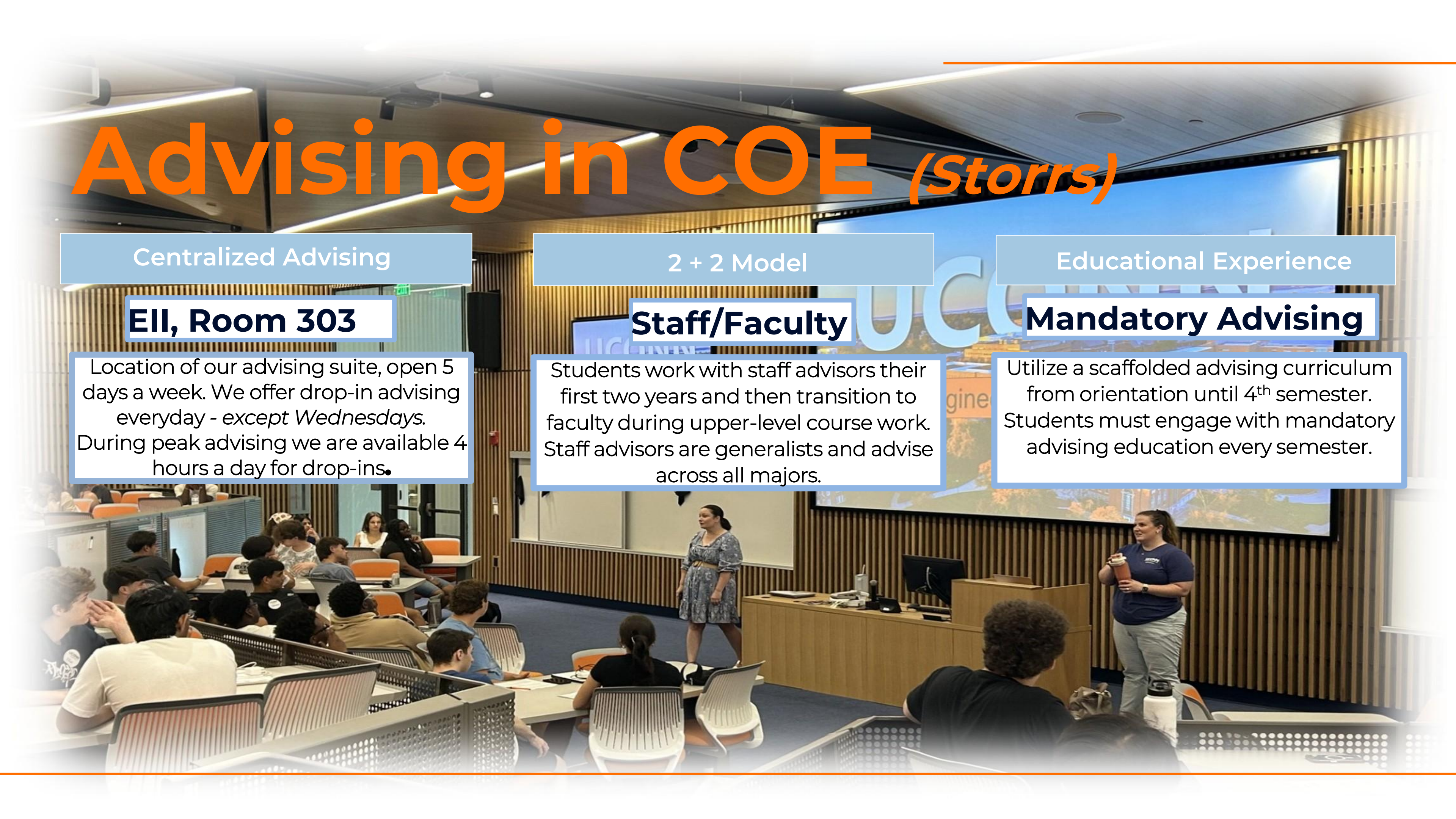
Staff/Faculty

Students work with staff advisors their first two years and then transition to faculty during upper-level course work. Staff advisors are generalists and advise across all majors.

Educational Experience

Mandatory Advising

Utilize a scaffolded advising curriculum from orientation until 4th semester. Students must engage with mandatory advising education every semester.



First Semester

CHEM 1127Q (*Note: CS and DSE have other lab options*)

Alternate sequence (CHEM 1124Q + CHEM 1125Q) accepted

MATH 1131Q

Or next sequence in math sequence. MATH 1060Q credit restriction

CSE 1010

Fall enrollment restricted to ENGR at Storrs Campus

ENGR 1000

Fall enrollment restricted to ENGR at Storrs Campus

ENGL 1007/TOI Course

CoE does not currently have specific TOI requirements, but ENGR 2001 (TOI 1) strongly recommended (likely future req.)



NOTE: ENGR 1000 is required, however, it will be waived for those who cannot take it in their first semester at UConn.

'New' Course (Storrs Only)



UCONN
COLLEGE OF ENGINEERING

ENGR 2001 AI LITERACY

Learn AI by using it.

Designed to equip students with the knowledge and skills necessary for effective engagement with GenAI.

3 CREDITS **TOI-1**

Hybrid with in-person labs
ENROLL TODAY!
No prerequisites and no prior experience with AI required
Open to all majors

Formerly offered as ENGR 1195-AI4All (2 credits)

NOTE: Students cannot earn credit for ENGR 2001 after passing ENGR 1195

WHAT YOU'LL LEARN

- How to use AI tools for learning, writing, and creativity
- How to design effective prompts and AI workflows
- How to spot errors, bias, and misinformation in AI outputs
- How to use AI ethically and responsibly

COURSE HIGHLIGHTS

- Ethical considerations, personal voice preservation, and practical applications
- Small classes with hands-on labs
- Multidisciplinary approach
- Emphasis on personalized and inclusive learning environments

FOR MORE INFORMATION: ✉ ai4all@uconn.edu

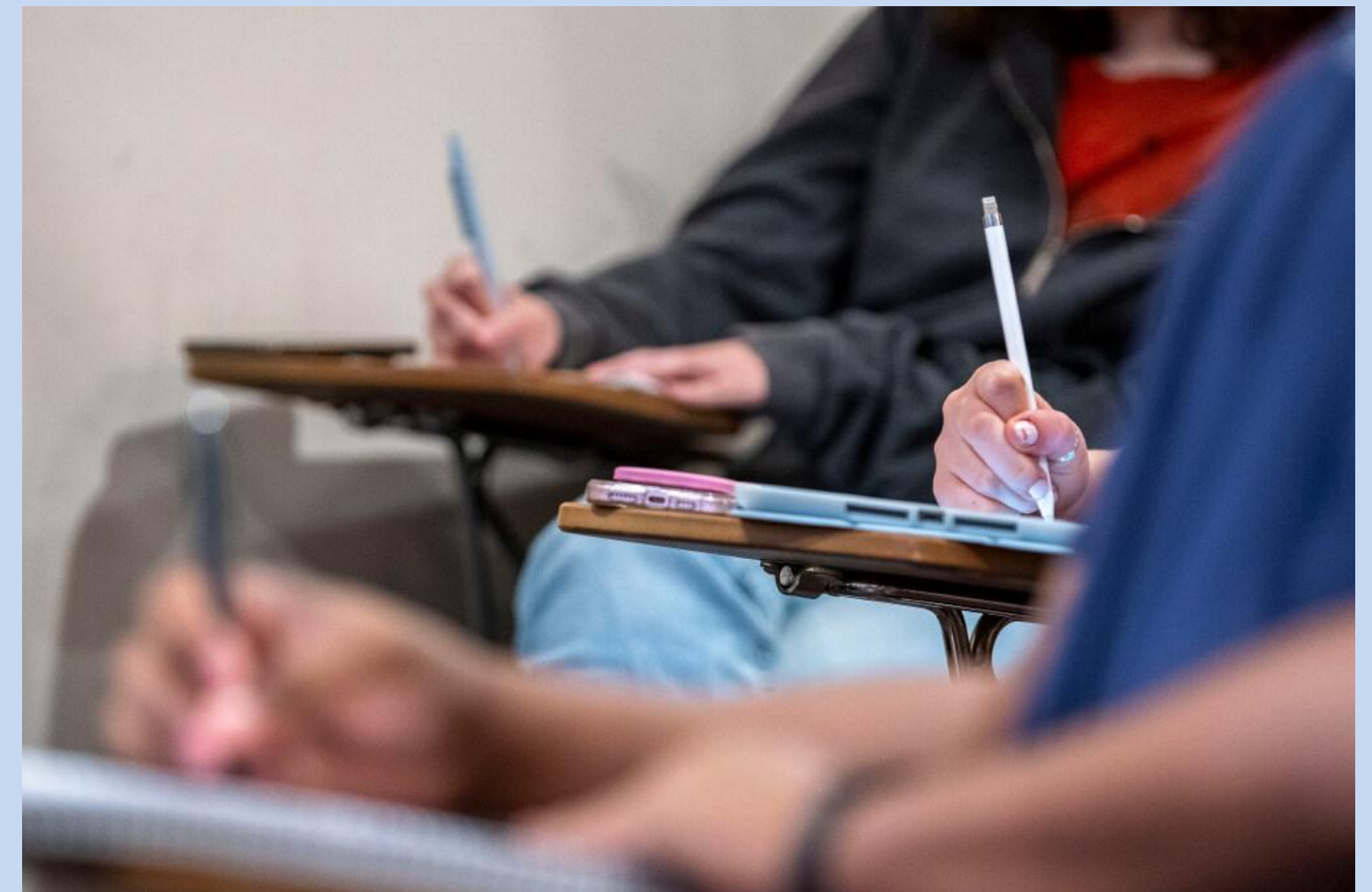
engineering.uconn.edu

Internal Admission

- Academic review only!
- All majors admit at mins, except MEM
(<https://advising.engineering.uconn.edu/internal-admission-process-and-criteria/>):
 - 2.7 cum GPA
 - C minimum grade in most recent term STEM coursework
 - Minimum Coursework: 3-credit ENGR course, Lab Science, Calculus 1 or beyond at UConn with C minimum grade
 - Full time status (no withdrawals in STEM semester applying)
- Admission required by 5th semester, or 3000-level coursework for transfer students.

New this fall:

**ENGR 2001 will count as
3-credit ENGR course for
admission**



CoE Supplementary Scholastic Standards

After 24 credits in residence

- **2.5** cGPA or above will be good standing
- **2.3-2.499** cGPA will be CoE supplemental scholastic warning

Below a **2.3** cGPA will be subject to discontinuation from CoE (to ACES)

Review of status in winter and summer



Discontinuation from CoE

Only once a year; Summer

Returning to CoE

Working with students it's important to make sure that they parallel plan and check eligibility for future admission.

Regional Campus Engineering

Ideally students should match their major curriculum as much as possible. Although sometimes that might not be possible based on semesters offerings.

Students should be completing 1-2 years at a regional campus, but reviews are done on an individual basis.

For more information:

<https://advising.engineering.uconn.edu/regional-advising/regional-advising-contacts/>



Computer Science is a four-year major at Stamford and advised by Christine Baskin at Stamford + CS Faculty

Point of Contact

Shoshana Armington

Email: shoshana.armington@uconn.edu

Website: advising.engineering.uconn.edu

Appointments via Nexus

To evaluate transfer equivalencies :

Student needs to send previous course syllabus and what UConn course they believe it to be.



Thank You

Any Questions?

UConn
COLLEGE OF ENGINEERING

ADVISING
